

**HOUSE OF  
FINN JUHL**



**500 TABLE** 1958  
**BY FINN JUHL**

## 500 TABLE 1958

This series of coffee tables was designed by Finn Juhl for France & Son in 1958, in similar fashion to the Japan Series. During the 50s the company accounted for 60% of all Danish furniture exports. With delicate details the table represents a style that became very typical for Scandinavian mid-century furniture.

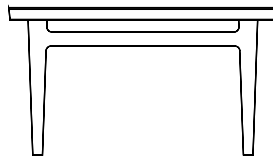


### PRODUCT INFO

CATEGORY	Table
DESIGN	Finn Juhl
YEAR	1958, relaunched in 2008
MATERIALS	Walnut or oak
DIMENSIONS	Size: L 84 cm x W 78 cm X H 46 cm Weight: 25 kg Cbm: 0,38 m <sup>3</sup>
	Size: L 145 cm x W 51 cm x H 46 cm Weight: 30 kg Cbm: 0,43 m <sup>3</sup>

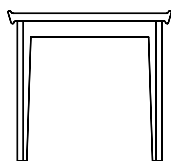


78 cm

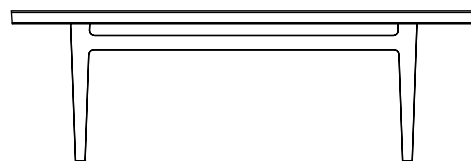


84 cm

46 cm



51 cm



145 cm

46 cm